

Cours d'harmonica diatonique

Partez de zéro, devenez pro !

La formation complète



1

Bertrand Carbonneaux

♩ = 75 ♪ = ♩³

FM7

CM7

Am7

Em7

5

FM7 Em7 FM7 G

6+ 6 6+ 5+ 6+ 6+ 6 7 6 6+ 4 6+

9

CM7 Am7 Em7 FM7

7 6 6+ 5+ 4 4+ 5+ 4 5 5+ 6+ 6 5+

Bertrand Carbonneaux

♩ = 75 ♪ = ♩³ ♪

FM7

CM7

Am7

Em7

A musical staff in treble clef with a common time signature (C). It contains four measures, each with a whole rest. The staff is divided into four equal parts by vertical bar lines.

5

FM7 Em7 FM7 G

A musical staff in treble clef with a common time signature (C). It contains four measures of music. Measure 5: quarter notes C4, D4, E4, F4. Measure 6: quarter notes G4, A4, B4, C5. Measure 7: quarter notes D5, E5, F5, G5. Measure 8: quarter notes A5, B5, C6, B5. Fingerings are indicated below the notes.

1+ 1 2+ 2 2 2 3 4+ 3+ 4+ 3+ 2+ 1 2+ 1 2 3 4 5+ 4

9

CM7 Am7 Em7 FM7

A musical staff in treble clef with a common time signature (C). It contains four measures of music. Measure 9: quarter notes C4, D4, E4, F4. Measure 10: quarter notes G4, A4, B4, C5. Measure 11: quarter notes D5, E5, F5, G5. Measure 12: quarter notes A5, B5, C6, B5. Fingerings are indicated below the notes.

3 2 3 2 2+ 1+ 1 2+ 1 2+ 2 3 4 5+ 6+ 7 5+

Bertrand Carbonneaux

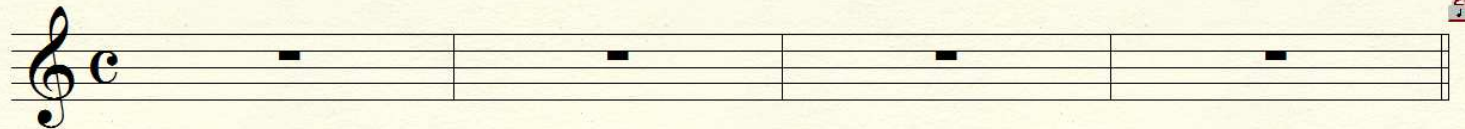
$\text{♩} = 75$ $\text{♪} = \text{♩}^3$

FM7

CM7

Am7

Em7



5 FM7 Em7 FM7 G

6+ 6+ 6 6+ 5 6+ 6 6+ 5 5+ 6+ 6 7 6 6+ 5 5+ 4

9 CM7 Am7 Em7 FM7

5+ 4+ 4 5+ 6+ 7+ 7 7+ 8 7 6+ 5+ 6 6+ 6+

♩ = 75 ♪ = ♩³ ♩

FM7

CM7

Am7

Em7

A musical staff in treble clef with a common time signature (C). It contains four measures, each with a whole rest. The staff is divided into four equal parts by vertical bar lines.

FM7

Em7

FM7

G

Musical staff with notes and fingerings for measures 5 through 8. Measure 5 has a whole note with fingerings 2+, 2+, 2+, 2+, 2+, 2+, 2+, 2+. Measure 6 has a half note with fingerings 2, 3, 2, 2+ and a quarter note with fingerings 1, 2+, 2, 3. Measure 7 has a half note with fingerings 4+, 4, 5+, 4 and a quarter note with fingerings 4+, 4, 5+, 4+. Measure 8 has a quarter note with fingerings 3, 2, 2.

CM7

Am7

Em7

FM7

Musical staff with notes and fingerings for measures 9 through 12. Measure 9 has a whole note with fingerings 2+, 2+, 2+, 2+, 2+, 2+, 2+, 2+. Measure 10 has a half note with fingerings 2, 3, 2, 2+ and a quarter note with fingerings 1, 2+, 2, 3. Measure 11 has a half note with fingerings 3, 3+, 3+ and a quarter note with fingerings 3, 3+, 3+. Measure 12 has a quarter note with fingerings 4+, 3+, 3+.

♩ = 75 ♪ = ♩³

FM7

CM7

Am7

Em7

A musical staff in treble clef with a common time signature (C). It contains four measures, each with a whole rest. A small lock icon is visible at the end of the staff.

5

FM7 Em7 FM7 G

A musical staff in treble clef with a common time signature (C). It contains four measures of music. The notes and their fret numbers are: Measure 1: F4 (4+), A4 (3); Measure 2: G4 (3); Measure 3: F4 (3+), E4 (3+); Measure 4: G4 (2+), A4 (2+), B4 (1), C5 (2+), D5 (3+), E5 (3), F5 (4), G5 (3+), A5 (4+). A small lock icon is visible at the end of the staff.

9

CM7 Am7 Em7 FM7

A musical staff in treble clef with a common time signature (C). It contains four measures of music. The notes and their fret numbers are: Measure 1: C5 (3); Measure 2: D5 (3+), E5 (2+), F5 (3+); Measure 3: G5 (3+), A5 (2+), B5 (3+); Measure 4: C6 (3+), D6 (3), E6 (4+). A small lock icon is visible at the end of the staff.

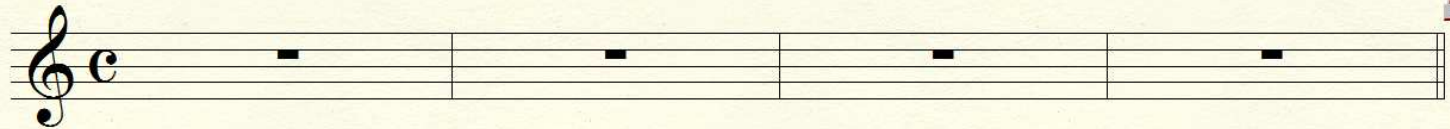
♩ = 75 ♪ = ♩³

FM7

CM7

Am7

Em7



FM7
8va

Em7

FM7

G



9+ 9+ 10 9+ 8+

9+ 9+ 10 9+ 8+

6+ 6+ 6 6+ 5+

6+ 6+ 6 6+ 5+

CM7

Am7

Em7

FM7



6+ 6+ 6 6+ 5+ 4 4+ 4

5+ 5 6+ 6 7 7+ 8 9+

9 8+ 8 7+ 7

8+ 8 7+ 7 6

Bertrand Carbonneaux

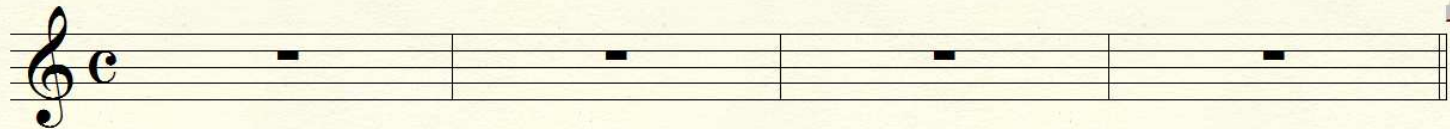
♩ = 75 ♪ = ♩³

FM7

CM7

Am7

Em7



FM7

Em7

FM7

G

8va



6+ 7+ 8+ 9+ 8+ 8 8+ 7 8+ 9+ 8+ 9 8+ 6+ 7 6+ 5+

CM7

Am7

Em7

FM7



4 4+ 4 5+ 4 6+ 4 7 7+ 8 8+ 8 7+ 7 6 6+ 5+ 6+ 5+ 4+